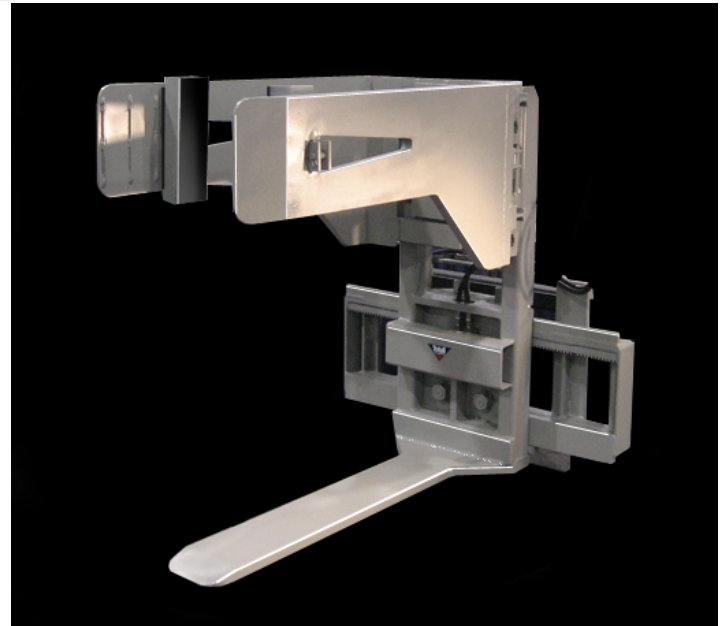
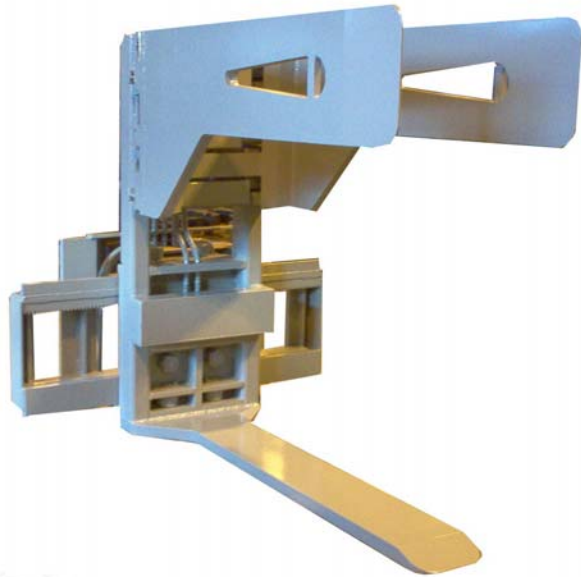


# **MARBLE AND STONE BUNDLE EXTRACTOR ATTACHMENT**

The T53 Slab Extractor installs onto the carriage quickly. It is free-standing when dismantled.



Removable forklift attachment used to unload stone slab bundles safely from closed-top containers.

Fork blade lifts load end, arms hydraulically clamp & stabilize loads vertically

Full-traverse sideshift moves the clamp across the base carriage over the full width.

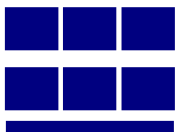
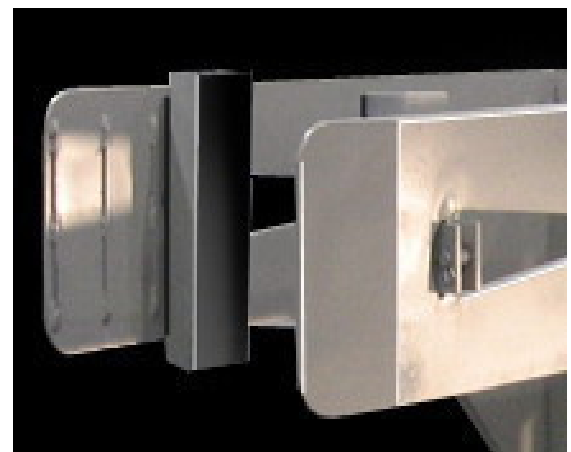
Cables or chains are not required to extract slab bundles. If used, the slotted arm provides convenient attaching points.

Keep personnel out of the slabs. Use the T-53 Slab Extractor.



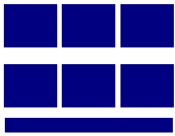
Our exclusive rubber-covered adapter pads are included. These are used to clamp bundles when the uprights are missing or broken.

T53 has grip ribbing welded on the arm tip for secure bite and sure extraction force.

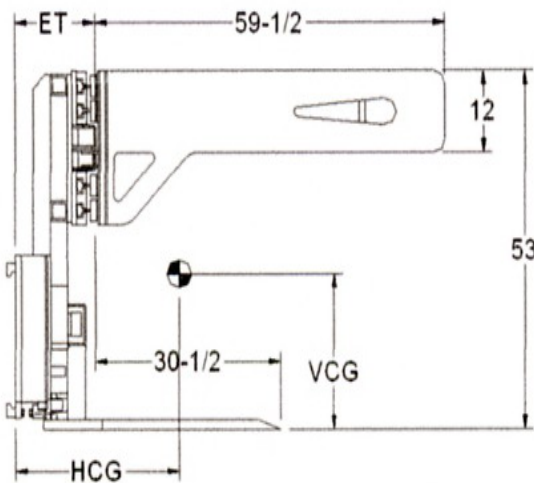
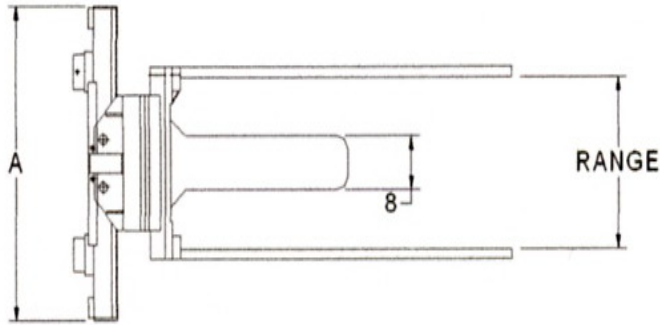


**Unit Load Handling Systems Inc**

2301 S. Mission Circle  
Friendswood, TX 77546  
PH: 281-992-2006 FX: 281-992-2040  
[www.unitloadhandling.com](http://www.unitloadhandling.com)



## T53 Slab Extractor SPECIFICATIONS



### Note!

Capacities shown below refer to lifting only one end of the load. The objective of this unit is to hydraulically clamp and elevate one end of the crated slab (stabilizing it), ready for safe transportation to another location.

### Lift Truck Requirements:

- 8-10,000 lb capacity Min.
- 4-way valve and hose group
- QD couplings if to be removed. Mounting hooks are not QD. Socket wrench required.
- Overall height maximum of mast lowered and OH guard: 88 inches
- Truck width not to exceed 52 inches
- Draw bar pull at least 7000 ft lb
- Freelift should be at least 11 inches

### NOTE:

The T53 Extractor is designed to work inside the container from dock level. If it is used at ground level the forward bundles must be dragged to the rear of the box using cables, chains or slings. This makes the bundles unstable during movement. Use extreme caution. Keep people out of the container while dragging. Bundles **MUST** be supported by container lip while transport slings are applied.

**Side shift provides 34 inches total traverse.**

Model No	Type	Capacity @ 24 inch LC	Opening Range	Sideshift each side	Mfg Class	Weight	A	ET	HCG	vcg
T53-50-9-20S3	Sideshifting	5000	9 IN- 20 IN	17	III	1886	46	14.4	15.7	16
T53-50-9-24S3	Sideshifting	5000	9 IN- 24 IN	17	III	2280	46	14.4	17.8	18.7
T53-50-9-24S4	Sideshifting	5000	9 IN- 24 IN	17	IV	2335	46	14.4	17.9	18.7

Trailer jacks must be used to prevent container sway during unloading with a clamp truck.

Clamp and stabilize bundles before cutting the last bracing to free the bundle.

Unit Load Handling Slab Extractor Clamps are manufactured by Totall Attachments, Oakville, Ontario.