

FORWARD BIN TIPPER

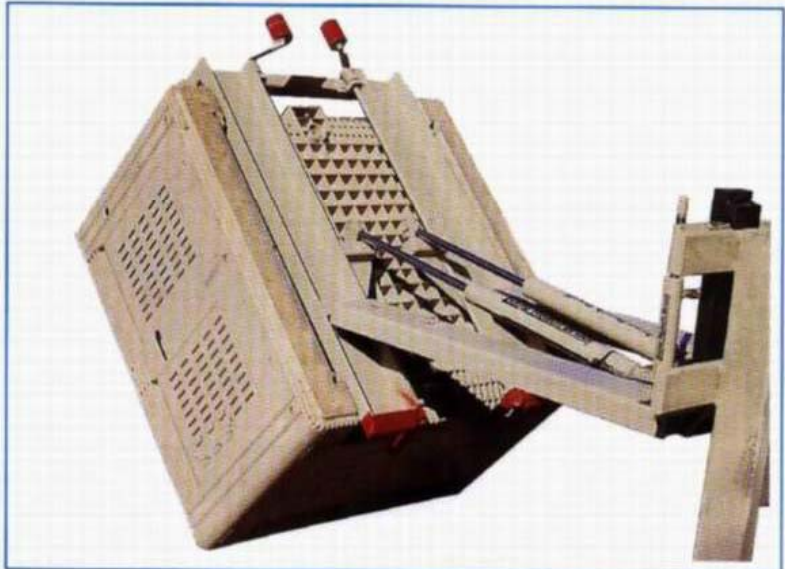
Applications

Forward tipping of:

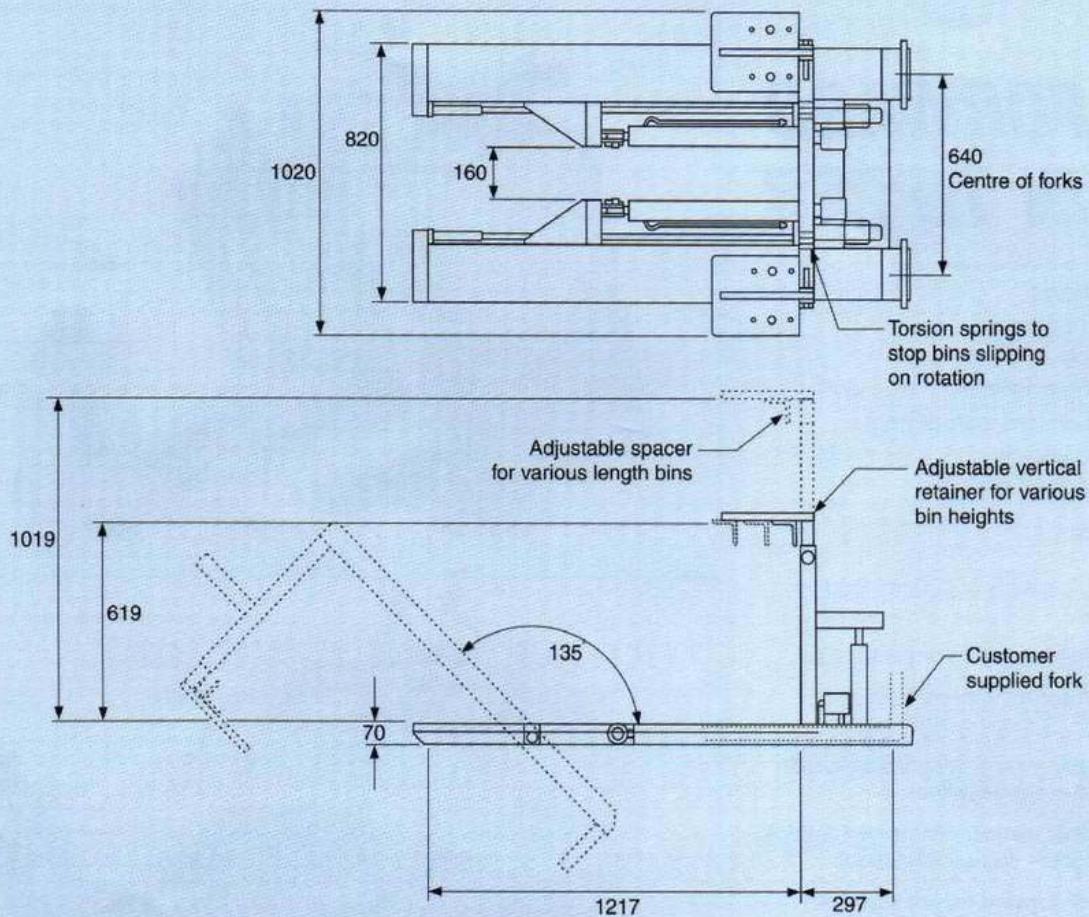
- Produce
- Scrap and refuse
- Manufactured components
- Raw materials
- Sand and gravel etc.

Features:

- ❑ 1000kg capacity at 600mm load centres.
- ❑ Suitable for wooden or plastic bins.
- ❑ Torsion spring front restraints eliminate bin slippage at 135 degrees.
- ❑ Adjustable spacer for various length bins - see specifications.
- ❑ Adjustable vertical retainer for various bin heights - see specifications.
- ❑ Full 135° forward motion ensures complete emptying of bin.
- ❑ Quick release hydraulic couplings provided.
- ❑ Requires only one auxiliary forklift truck valve for operation.
- ❑ Hydraulic tipping cylinders are fitted with self aligning knuckles.
- ❑ Unit can be quickly attached and detached with slippers and ball lockpins, allowing the use of the forklift truck in the conventional manner.
- ❑ Unique design allows optimum visibility.
- ❑ Adjustable forward tipping speed.
- ❑ Robust construction for agricultural applications.
- ❑ Easily accessed and serviced hydraulic cylinders.



Forward Bin Tipper - BTB20 - A01



FITS FORK MSIZES UP TO 2" X 6" CROSS SECTION. ADAPTS TO MOST PRODUCE BIN SIZES; CUSTOM BUILT UNITS ARE AVAILABLE TO ACCOMMODATE ALTERNATE SIZES OF BOXES OR BINS. ASK UNIT LOAD HANDLING ABOUT 180 AND 360 DEGREE SIDE DUMPING ROTATORS. THESE ARE AVAILABLE WITH OR WITHOUT TOP CLAMPING STABILIZERS.

BIN RANGE

Height: 600 - 1010mm from top of forks
 Length: 1000 - 1210mm (Adjustable spacer)
 Other bin options available.

SPECIFICATIONS:

AET 297mm
 HCC 610mm
 VCG 110mm
 Weight 175kgs
 Note: For tipping specifications consult factory.

Specifications are nominal and subject to change without notice.



UNIT LOAD HANDLING SYSTEMS, INC

2301 SOUTH MISSION CIRCLE, FRIENDSWOOD, TX 77546
 PH: 281-992-2006 FAX: 281-992-2040